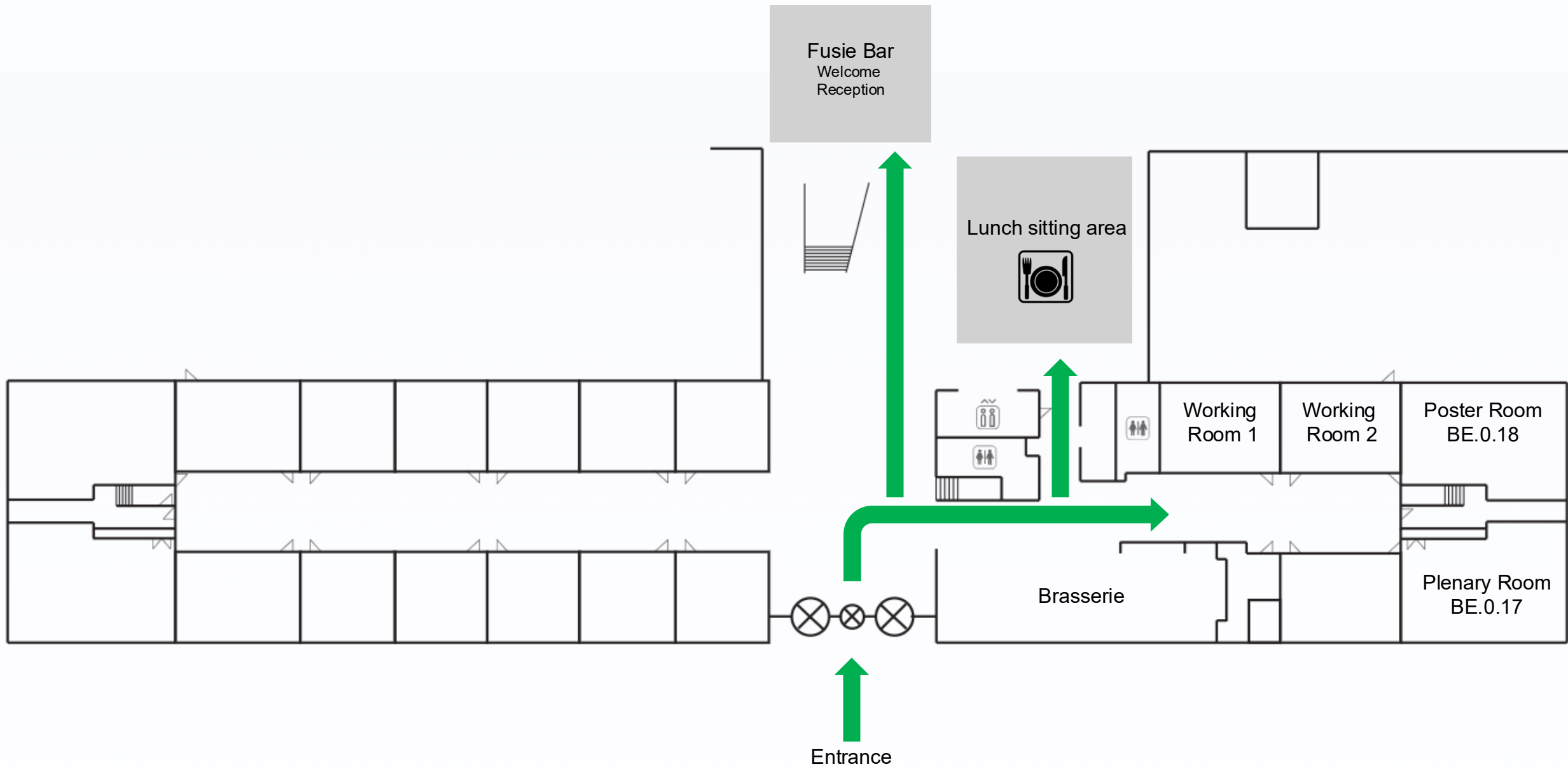


# FOGA 2025 Info



# Info for social Dinner

## Conference Social Dinner

**Thursday, 28 August 2025**

**19:00 – 23:00 hrs**

The FOGA conference social dinner, which will take place at:

### **Willy Zuid**

Boulevard Zeezijde 51

2225 BB Katwijk aan Zee

<http://www.strandhuisjeswillyzuid.nl>

This seaside location offers a relaxed atmosphere and a beautiful view of the Dutch coast.

### **Getting there**

From Leiden Central Station, bus **401** runs directly to Katwijk in about **32 minutes**. The bus departs every 30 minutes and also stops at **Bio Science Park-Oost**, located near the conference venue.

To reach the bus stop **Bio Science Park-Oost**, simply exit the Gorlaeus building and walk straight to the main road (**Plesmanlaan**). Alternatively, the same bus can be taken from Leiden Centraal.

For a complete timetable and further information on travelling by public transport in the Netherlands, please visit: [www.9292.nl](http://www.9292.nl).

# Info for social Dinner

Conference Social Dinner

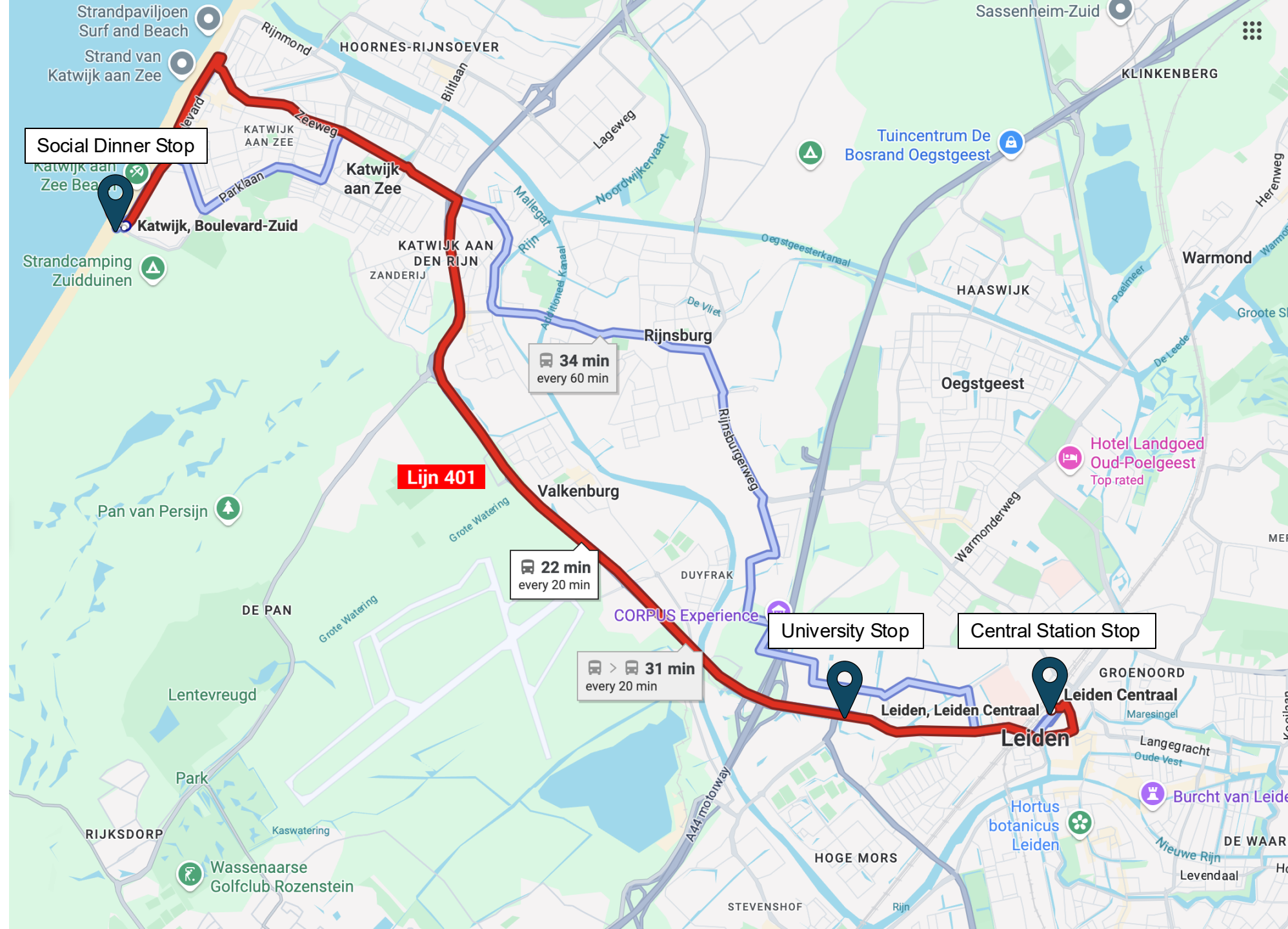
Thursday, 28 August 2025

19:00 – 23:00 hrs

**WILLY ZUID**  
BEACHBUNGALOWS

<http://www.strandhuisjeswillyzuid.nl>





# Lijn 401 van Zoetermeer via Leiden naar Katwijk-Centrum

maandag t/m vrijdag normale dienstregeling

Ritnummer:		1114	1116	1118	1120	1122	1124	1126	1128	1130	1132	1134	1136	1138	1140
Centrum West, Zoetermeer	V	17:36	17:46	17:56	18:06	18:16	18:26	18:46	19:16	19:47	20:17	20:47	21:17	21:47	22:17
Woonhart, Zoetermeer		17:38	17:48	17:58	18:08	18:18	18:28	18:48	19:18	19:49	20:19	20:49	21:19	21:49	22:19
Binnenpark, Zoetermeer		17:40	17:50	18:00	18:10	18:20	18:30	18:50	19:19	19:50	20:20	20:50	21:20	21:50	22:20
Meerpolder, Zoetermeer		17:41	17:51	18:01	18:11	18:21	18:31	18:51	19:20	19:51	20:21	20:51	21:21	21:51	22:21
Stompwijk, Stompwijk		17:44	17:54	18:04	18:14	18:24	18:34	18:54	19:23	19:54	20:24	20:54	21:24	21:54	22:24
Dorp, Zoeterwoude		17:47	17:57	18:07	18:17	18:27	18:37	18:57	19:26	19:57	20:27	20:57	21:27	21:57	22:27
A4 P+R, Zoeterwoude		17:49	17:59	18:09	18:19	18:29	18:39	18:59	19:28	19:59	20:29	20:59	21:29	21:59	22:29
Station Lammenschans, Leiden		17:54	18:04	18:14	18:24	18:34	18:44	19:04	19:32	20:03	20:33	21:03	21:33	22:03	22:33
Hogewoerd, Leiden		17:57	18:07	18:17	18:27	18:37	18:47	19:07	19:35	20:06	20:36	21:06	21:36	22:06	22:36
Pelikaan, Leiden		17:59	18:09	18:19	18:29	18:39	18:49	19:09	19:37	20:08	20:38	21:08	21:38	22:08	22:38
Energiepark, Leiden		18:01	18:11	18:21	18:31	18:41	18:51	19:11	19:39	20:10	20:40	21:10	21:40	22:10	22:40
Leiden Centraal Westzijde, Leiden		18:03	18:13	18:23	18:33	18:43	18:53	19:13	19:41	20:12	20:42	21:12	21:42	22:12	22:42
Leiden Centraal	A	18:05	18:15	18:25	18:35	18:45	18:55	19:14	19:42	20:13	20:43	21:13	21:43	22:13	22:43
Leiden Centraal	V	18:07	18:17	18:27	18:37	18:47	18:57	19:16	19:44	20:15	20:45	21:15	21:45	22:15	22:45
Verbeekstraat, Leiden		18:10	18:20	18:30	18:40	18:50	19:00	19:18	19:46	20:17	20:47	21:17	21:47	22:17	22:47
Bio Science Park-Oost, Leiden		18:11	18:21	18:31	18:41	18:51	19:01	19:19	19:47	20:18	20:48	21:18	21:48	22:18	22:48
Bio Science Park-West, Oegstgeest		18:14	18:24	18:34	18:44	18:54	19:03	19:21	19:49	20:20	20:50	21:20	21:50	22:20	22:50
Valkenburg Oost/N206, Valkenburg		18:17	18:27	18:37	18:47	18:57	19:05	19:23	19:51	20:22	20:52	21:22	21:52	22:22	22:52
Duinvallei/N206, Katwijk a/d Rijn		18:20	18:30	18:40	18:50	19:00	19:07	19:25	19:53	20:24	20:54	21:24	21:54	22:24	22:54
Gemeentehuis, Katwijk		18:23	18:33	18:43	18:53	19:02	19:09	19:27	19:55	20:26	20:56	21:26	21:56	22:26	22:56
Marktplaats, Katwijk		18:24	18:34	18:44	18:54	19:03	19:10	19:28	19:56	20:27	20:57	21:27	21:57	22:27	22:57
Zwanenburg, Katwijk		18:25	18:35	18:45	18:55	19:04	19:11	19:29	19:57	20:28	20:58	21:28	21:58	22:28	22:58
Centrum, Katwijk		18:27	18:37	18:47	18:57	19:06	19:13	19:31	19:59	20:30	21:00	21:30	22:00	22:30	23:00
Vuurbaak, Katwijk		18:30	18:40	18:50	19:00	19:09	19:16	19:34	20:02	20:33	21:03	21:33	22:03	22:33	23:03
Boulevard-Zuid, Katwijk	A	18:33	18:43	18:53	19:03	19:12	19:19	19:37	20:05	20:36	21:06	21:36	22:06	22:36	23:06



# Lijn 401 van Katwijk-Centrum via Leiden naar Zoetermeer

maandag t/m vrijdag normale dienstregeling

Ritnummer:	1113	1115	1117	1119	1121	1123	1125	1127	1129	1131	1133	1135	1137	1139	1141	1143	1145
Boulevard-Zuid, Katwijk V	17:16	17:26	17:38	17:53	18:08	18:36	19:11	19:41	20:11	20:41	21:11	21:41	22:11	22:41	23:11	23:41	00:11
Vuurbaak, Katwijk	17:17	17:27	17:39	17:54	18:09	18:37	19:12	19:42	20:12	20:42	21:12	21:42	22:12	22:42	23:12	23:42	00:12
Centrum, Katwijk	17:19	17:29	17:41	17:56	18:11	18:39	19:14	19:44	20:14	20:44	21:14	21:44	22:14	22:44	23:14	23:44	00:14
Zwanenburg, Katwijk	17:20	17:30	17:42	17:57	18:12	18:40	19:15	19:45	20:15	20:45	21:15	21:45	22:15	22:45	23:15	23:45	00:15
Marktpllein, Katwijk	17:22	17:32	17:44	17:59	18:14	18:42	19:16	19:46	20:16	20:46	21:16	21:46	22:16	22:46	23:16	23:46	00:16
Gemeentehuis, Katwijk	17:24	17:34	17:46	18:01	18:16	18:44	19:18	19:48	20:18	20:48	21:18	21:48	22:18	22:48	23:18	23:48	00:18
Duinvallei/N206, Katwijk a/d Rijn	17:26	17:36	17:48	18:03	18:18	18:46	19:20	19:50	20:20	20:50	21:20	21:50	22:20	22:50	23:20	23:50	00:20
Valkenburg Oost/N206, Valkenburg	17:30	17:40	17:52	18:07	18:22	18:50	19:22	19:52	20:22	20:52	21:22	21:52	22:22	22:52	23:22	23:52	00:22
Bio Science Park-West, Oegstgeest	17:33	17:43	17:55	18:10	18:25	18:53	19:24	19:54	20:24	20:54	21:24	21:54	22:24	22:54	23:24	23:54	00:24
Bio Science Park-Oost, Leiden	17:36	17:46	17:58	18:13	18:28	18:56	19:26	19:56	20:26	20:56	21:26	21:56	22:26	22:56	23:26	23:56	00:26
Verbeekstraat, Leiden	17:37	17:47	17:59	18:14	18:29	18:57	19:27	19:57	20:27	20:57	21:27	21:57	22:27	22:57	23:27	23:57	00:27
Leiden Centraal A	17:41	17:51	18:03	18:18	18:33	19:01	19:30	20:00	20:30	21:00	21:30	22:00	22:30	23:00	23:30	00:00	00:30
Leiden Centraal V	17:43	17:53	18:05	18:20	18:35	19:03	19:32	20:02	20:32	21:02	21:32	22:02	22:32	23:02	23:32	00:02	00:32
Leiden Centraal Westzijde, Leiden	17:44	17:54	18:06	18:21	18:36	19:04	19:33	20:03	20:33	21:03	21:33	22:03	22:33	23:03	23:33	00:03	00:33
Energiepark, Leiden	17:47	17:57	18:09	18:24	18:39	19:06	19:35	20:05	20:35	21:05	21:35	22:05	22:35	23:05	23:35	00:05	00:35
Pelikaan, Leiden	17:49	17:59	18:11	18:26	18:41	19:08	19:37	20:07	20:37	21:07	21:37	22:07	22:37	23:07	23:37	00:07	00:37
Hogewoerd, Leiden	17:52	18:02	18:14	18:29	18:44	19:10	19:39	20:09	20:39	21:09	21:39	22:09	22:39	23:09	23:39	00:09	00:39
Station Lammenschans, Leiden	17:55	18:05	18:17	18:32	18:47	19:12	19:41	20:11	20:41	21:11	21:41	22:11	22:41	23:11	23:41	00:11	00:41
A4 P+R, Zoeterwoude	18:00	18:10	18:22	18:37	18:52	19:16	19:45	20:15	20:45	21:15	21:45	22:15	22:45	23:15	23:45	00:15	00:45
Dorp, Zoeterwoude	18:01	18:11	18:23	18:38	18:53	19:17	19:46	20:16	20:46	21:16	21:46	22:16	22:46	23:16	23:46	00:16	00:46
Stompwijk, Stompwijk	18:05	18:15	18:27	18:42	18:57	19:21	19:50	20:20	20:50	21:20	21:50	22:20	22:50	23:20	23:50	00:20	00:50
Meerpolder, Zoetermeer	18:08	18:18	18:30	18:45	19:00	19:24	19:53	20:23	20:53	21:23	21:53	22:23	22:53	23:23	23:53	00:23	00:53
Binnenpark, Zoetermeer	18:09	18:19	18:31	18:46	19:01	19:25	19:54	20:24	20:54	21:24	21:54	22:24	22:54	23:24	23:54	00:24	00:54
Woonhart, Zoetermeer	18:11	18:21	18:33	18:48	19:03	19:27	19:56	20:26	20:56	21:26	21:56	22:26	22:56	23:26	23:56	00:26	00:56
Centrum West, Zoetermeer A	18:14	18:24	18:36	18:51	19:05	19:29	19:58	20:28	20:58	21:28	21:58	22:28	22:58	23:28	23:58	00:28	00:58



# Getting around via bus in Leiden (and Katwijk)

When using public transport in the Netherlands (bus, tram, metro, or train), you can pay in the following ways:

## 1. Contactless payment with your debit/credit card or mobile phone

Simply hold your debit or credit card (or your phone with Apple Pay/Google Wallet) against the card reader to check in and check out.

Accepted cards include Dutch bank cards (ABN AMRO, ASN Bank, Bunq, ING, Knab, Rabobank, RegioBank, SNS) and international **Visa** or **Mastercard** debit/credit cards.

## 2. OV-chipkaart (Public Transport Smart Card)

An **anonymous OV-chipkaart** can be used across all Dutch public transport.

Minimum balance: **€20** (for train travel) or **€4** (for bus, tram, or metro).

Cards cost **€7.50** and can be purchased at supermarkets, bookstores (Bruna, Primera, AKO, Readshop), or service desks of operators such as NS, GVB, Arriva, and Connexxion (often located at stations).

## 3. Single-ride tickets

For buses, you can also buy single-ride tickets via the 9292 App ([www.9292.nl](http://www.9292.nl)).

**!!!** Always remember to **check in** when boarding and **check out** when leaving by holding your card or phone against the card reader.